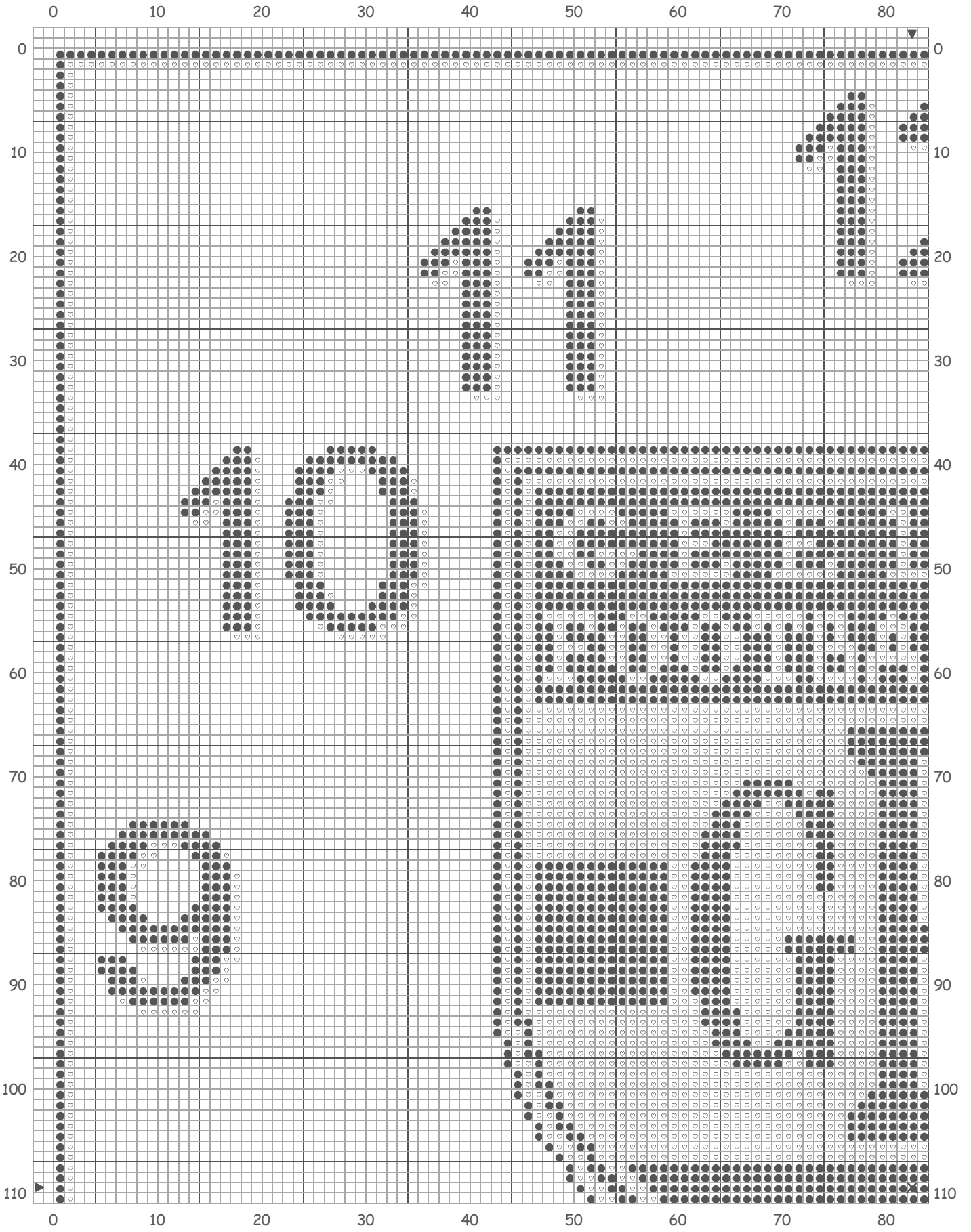


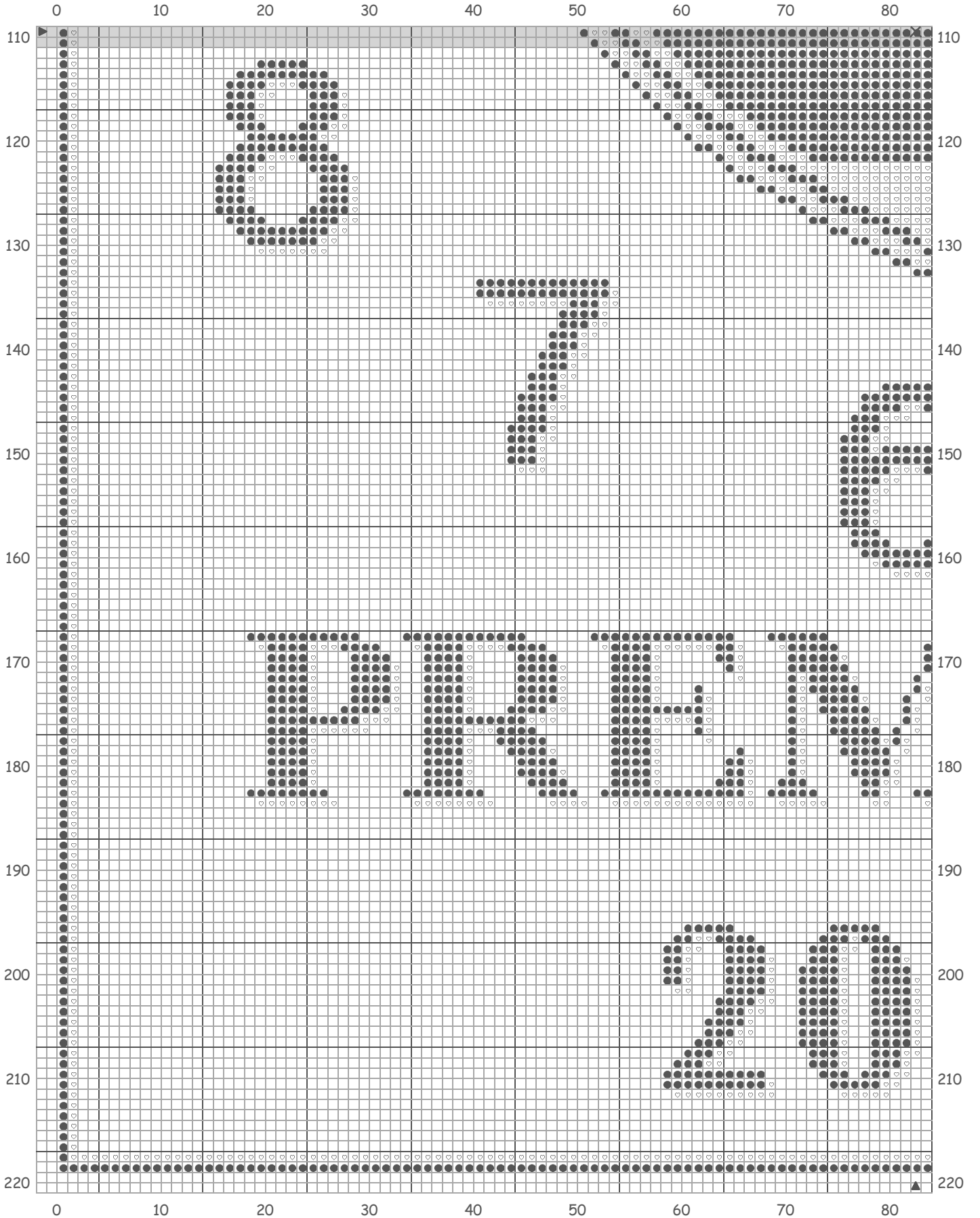
Geelong Premiers



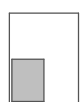
Design By: Alan Binding



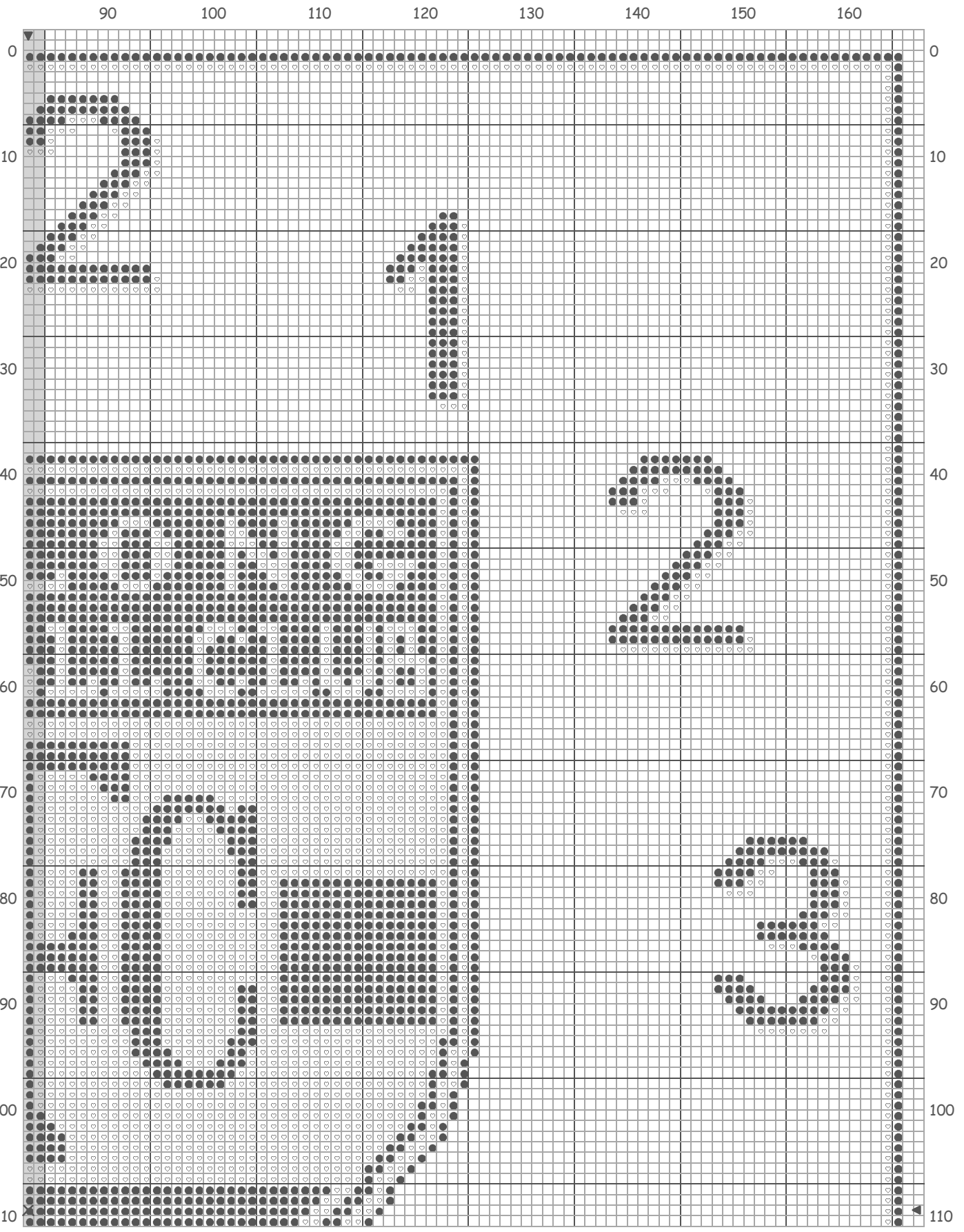
Geelong Premiers



Design By: Alan Binding



Geelong Premiers



Design By: Alan Binding



Geelong Premiers

| | | DMC | | |
|---|--------------|-------|--------|----------------|
| ● | Navy med | 311 | 987 in | 3.09 8m Skeins |
| ♡ | White bright | B5200 | 711 in | 2.23 8m Skeins |

Stitch Count 165 x 219

Design Area 11 3/4 x 15 5/8 inches at 14ct

Note: Vicstitch

PO Box 653, Belmont, VIC 3216

or

PO Box 95, Goomeri, QLD 4601

Tel/Fax 1300 739 376

On-Line Store www.vicstitch.com.au

Design By: Alan Binding